

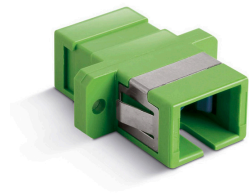
SC ADAPTERS

For Elite™ option, please add E to the Adapter code.
Example: AD-SCE-XX-XX-XX

- Ultra low insertion loss
- IEC60B74-14; F04 (JIS C5973); FOCIS-3; TIA/EIA-604-3A; Telcordia GR-326-4 CORE Compliant
- UL94 V-0 rated plastic housing or metal housings available
- With or without flange options for installation flexibility
- RoHS compliant

SPECIFICATION	SINGLEMODE	MULTIMODE
Insertion Loss	0.10dB Typical	0.15dB Typical
Durability	<0.1dB Typical change, 500 matings	

SC ADAPTER SIMPLEX



CODE	TYPE	COLOR	SLEEVE TYPE	FLANGE
AD-SC	SX	Simplex	1 Zirconia Ceramic	FL With Flange
	SX1P	One Piece Simplex	2 Phosphor Bronze	NF No Flange
			3 Elite Zirc. Ceramic (Ultra Low Loss)	
			4 Beige	
			5 Aqua	

ORDER CODE example: **AD-SC - SX - 31 - FL**

For Adapters with Shutters, please add:
-ESH to the end of the part number for External shutter installed
-ISH to the end of the part number for Internal shutter installed

SC ADAPTER DUPLEX



CODE	TYPE	COLOR	SLEEVE TYPE	FLANGE
AD-SC	DX	Duplex	1 Zirconia Ceramic	FL With Flange
	DX1P	One Piece Duplex	2 Phosphor Bronze	NF No Flange
			3 Elite Zirc. Ceramic (Ultra Low Loss)	
			4 Beige	
			5 Aqua	

ORDER CODE example: **AD-SC - DX - 11 - FL**

For Adapters with Shutters, please add:
-ESH to the end of the part number for External shutter installed
-ISH to the end of the part number for Internal shutter installed

SC SNUG FIT*



CODE	TYPE	COLOR	SLEEVE TYPE
AD-SCSF	SX	Simplex	1 Zirconia Ceramic
	DX	Duplex	2 Phosphor Bronze
			3 Elite Zirc. Ceramic (Ultra Low Loss)
			4 Beige
			5 Aqua

ORDER CODE example: **AD-SCSF - DX - 11**

For Adapters with Shutters, please add:
-ESH to the end of the part number for External shutter installed
-ISH to the end of the part number for Internal shutter installed

*Patent Pending

01/03/16-Interconnect-FAM-Rev 2.7 - Changes without prior notice

Specifications may change without notice. Display Product Photos Shown are samples for viewing, not actual products. Colours and styles may vary.

www.fiberon.com



HEADQUARTER
Tel. +1 508 616 9500
Fax +1 508 616 9600
sales@fiberon.com

USA-CA
Tel +1-408-262-8500
Fax +1-408-262-8600
sales@fiberon.com

POLAND
Tel. +48 71 727 7237
Fax +48 71 793 99 11
sales-eu@fiberon.com

Hong Kong, PRC
Tel. +852 3171 7616
Fax +852 3171 7613
sales-ch@fiberon.com

Taiwan (R.O.C.)
Tel. +886 939512000
Tel/Fax: +886 2 82854503
sales-tw@fiberon.com

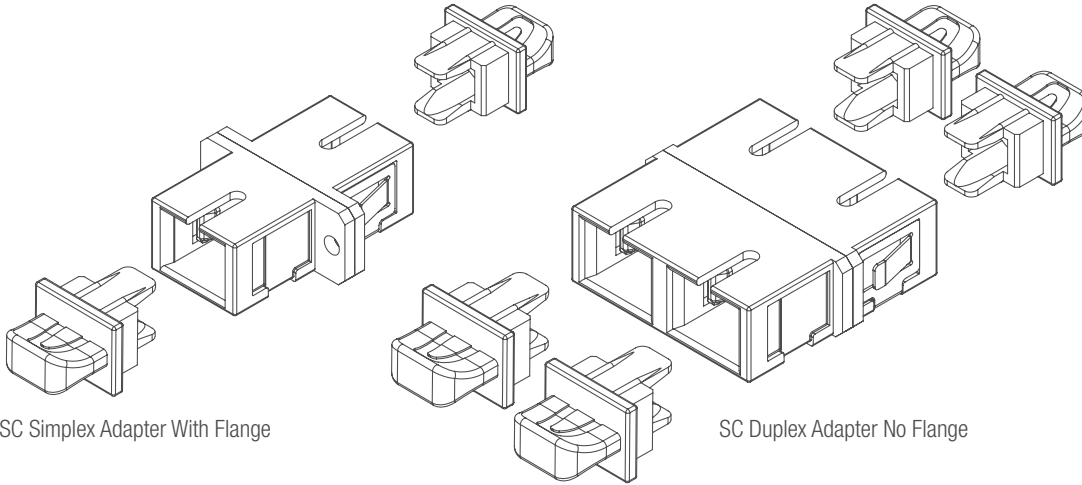
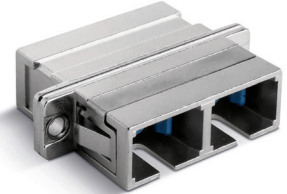
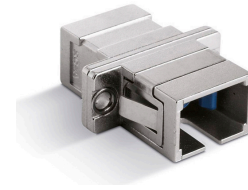
DUBAI, U.A.E.
Tel. +971 4 3712968
Fax +971 4 3712969
sales-mea@fiberon.com

SC METAL ADAPTER

CODE	TYPE		SLEEVE TYPE	
AD-SC	SXMT	Simplex	1	Zirconia Ceramic
	DXMT	Duplex	2	Phosphor Bronze
			3	Elite Zirc. Ceramic (Ultra Low Loss)

ORDER CODE example:

AD-SC - SXMT - 1



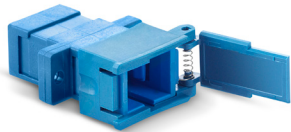
SC Simplex Adapter With Flange

SC Duplex Adapter No Flange

MATERIAL INFO

Housing (x2)	PBT
Hook (x2)	PES or PPS
Sleeve	Zirconia or Pb
Dust Cap (x2)	PP
Mounting Plate	SUS

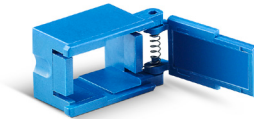
REMOVABLE SHUTTER SC SX/SC DX



ORDER CODE example:

RSH - SCSX - 1

CODE	TYPE		COLOR	
RSH	SCSX	SC Simplex	1	Blue
	SCDX	SC Duplex	2	Black
			3	Green
			4	Beige
			5	Aqua

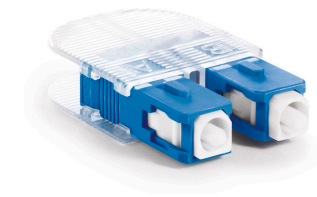


SC LOOPBACK MODULES

CODE	TYPE		CONNECTOR TYPE		FIBER	COLOR		
LB-SCK	SM	Singlemode	AA	SC/UPC	9	900µm Fiber	S	Transparent
	MM	Multimode	BB	SC/APC			2	Black MM

ORDER CODE example:

LB-SCK - SM - BB - 9 - S



Specifications may change without notice. Display Product Photos Shown are samples for viewing, not actual products. Colours and styles may vary.

www.fiberon.com