

MT-RJ SERIES

- Ultra low insertion loss
- High Density Solution
- UL94 V-0 rated plastic housing and boots
- RoHS compliant

SPECIFICATION	SINGLEMODE	MULTIMODE
Insertion Loss	< 0.2dB Typical	< 0.25dB Typical
Return Loss	≥ -50dB Typical	
Durability	< 0.1dB Typical change, 500 matings	
Operating Temperature	-40 to +75°C	

MT-RJ CONNECTOR

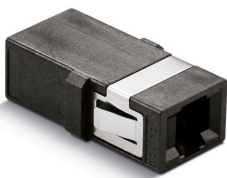


CODE	FERRULE TYPE	HOUSING COLOR	BOOT	BOOT COLOR
CN-RJF	MT-RJ Female	SM Singlemode 126µm	2	Black
CN-RJM	MT-RJ Male	MM Multimode 127µm	1	1.8mm Duplex Zip
			2	2.0mm Duplex Zip
			3	3.0mm Cable Round

ORDER CODE example:

CN-RJF - MM - 232

MT-RJ ADAPTER



ADAPTER CODE	COLOR	FLANGE
AD-RJ	Standard	1 Blue FL With Flange
AD-RJSC	SC Footprint	2 Black NF No Flange
	4 Beige	

ORDER CODE example:

AD-RJSC - 2 - NF