

LC ADAPTER

For Elite™ option, please add E to the Adapter code.
Example: AD-LCE-XX-X-X

- Ultra low insertion loss
- Small form factor, 50% of SC
- FOCIS-10; TIA/EIA-604-10 Compliant
- Telcordia GR-326-4 CORE Compliant
- UL94 V-0 rated plastic housing available
- With or without flange options for installation flexibility
- RoHS compliant

LC ADAPTER STANDARD



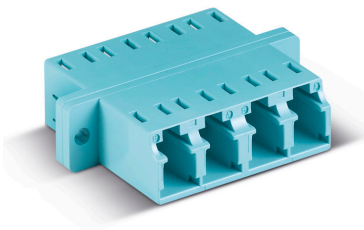
| CODE | TYPE | COLOR | SLEEVE TYPE |
|-------|------|---------|--|
| AD-LC | SX | Simplex | 1 Zirconia Ceramic |
| | DX | Duplex | 2 Phosphor Bronze |
| | | | 3 Elite Zirc. Ceramic (Ultra Low Loss) |
| | | | 4 Beige |
| | | | 5 Aqua |

ORDER CODE example:

AD-LC - DX - 31

For Adapters with Shutters, please add:
-ESH to the end of the part number for External shutter installed
-ISH to the end of the part number for Internal shutter installed

LC ADAPTER SC FOOTPRINT SNR/JUN



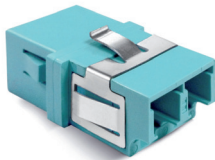
| CODE | TYPE | COLOR | SLEEVE TYPE | FLANGE |
|-------|------|--------|--|----------------|
| AD-LC | DXSJ | Duplex | 1 Zirconia Ceramic | FL With Flange |
| | QDSJ | Quad | 2 Phosphor Bronze | NF No Flange |
| | | | 3 Elite Zirc. Ceramic (Ultra Low Loss) | |
| | | | 4 Beige | |
| | | | 5 Aqua | |

ORDER CODE example:

AD-LC - QDSJ - 51 - FL

For Adapters with Shutters, please add:
-ESH to the end of the part number for External shutter installed
-ISH to the end of the part number for Internal shutter installed

LC SNUG FIT*



| CODE | TYPE | COLOR | SLEEVE TYPE |
|---------|------|--------|--|
| AD-LCSF | DX | Duplex | 1 Zirconia Ceramic |
| | QD | Quad | 2 Phosphor Bronze |
| | | | 3 Elite Zirc. Ceramic (Ultra Low Loss) |
| | | | 4 Beige |
| | | | 5 Aqua |

ORDER CODE example:

AD-LCSF - DX - 51

For Adapters with Shutters, please add:
-ESH to the end of the part number for External shutter installed
-ISH to the end of the part number for Internal shutter installed

*Patent Pending

01/03/16-Interconnect-FAM-Rev 2.7 - Changes without prior notice



Specifications may change without notice. Display Product Photos Shown are samples for viewing, not actual products. Colours and styles may vary.

www.fiberon.com

HEADQUARTER
Tel. +1 508 616 9500
Fax +1 508 616 9600
sales@fiberon.com

USA-CA
Tel +1-408-262-8500
Fax +1-408-262-8600
sales@fiberon.com

POLAND
Tel. +48 71 727 7237
Fax +48 71 793 99 11
sales-eu@fiberon.com

Hong Kong, PRC
Tel. +852 3171 7616
Fax +852 3171 7613
sales-ch@fiberon.com

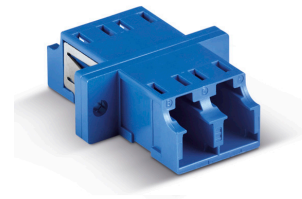
Taiwan (R.O.C.)
Tel. +886 939512000
Tel/Fax: +886 2 82854503
sales-tw@fiberon.com

DUBAI, U.A.E.
Tel. +971 4 3712968
Fax +971 4 3712969
sales-mea@fiberon.com

- Ultra low insertion loss
- Small form factor, 50% of SC
- UL94 V-0 rated plastic housing available
- With or without flange options for installation flexibility
- RoHS compliant

LC ADAPTER SYMMETRICAL WITH SC FOOTPRINT - SNR/SNR

| CODE | TYPE | COLOR | SLEEVE TYPE | FLANGE |
|-------|-------------|---------|--|----------------|
| AD-LC | DXSS Duplex | 1 Blue | 1 Zirconia Ceramic | FL With Flange |
| | QDSS Quad | 2 Black | 2 Phosphor Bronze | NF No Flange |
| | | 3 Green | 3 Elite Zirc. Ceramic (Ultra Low Loss) | |
| | | 4 Beige | | |
| | | 5 Aqua | | |

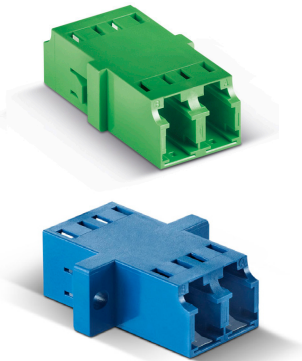


ORDER CODE example: **AD-LC - DXSS - 51 - FL**

For Adapters with Shutters, please add:
-ESH to the end of the part number for External shutter installed
-ISH to the end of the part number for Internal shutter installed

LC ONE PIECE ADAPTER SNR/SNR - SNR/JNR

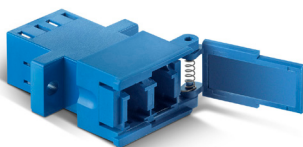
| CODE | TYPE | COLOR | SLEEVE TYPE | FLANGE |
|-------|-----------------------|---------|--|----------------|
| AD-LC | DX1PSS Duplex SNR/SNR | 1 Blue | 1 Zirconia Ceramic | FL With Flange |
| | DX1PSJ Duplex SNR/JNR | 2 Black | 2 Phosphor Bronze | NF No Flange |
| | | 3 Green | 3 Elite Zirc. Ceramic (Ultra Low Loss) | |
| | | 4 Beige | | |
| | | 5 Aqua | | |



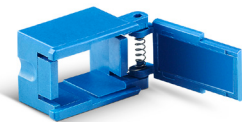
ORDER CODE example: **AD-LC - DX1PSS - 31 - NF**

For Adapters with Shutters, please add:
-ESH to the end of the part number for External shutter installed
-ISH to the end of the part number for Internal shutter installed

REMOVABLE SHUTTER LC DX/LC QD



| CODE | TYPE | COLOR |
|------|----------------|---------|
| RSH | LCDX LC Duplex | 1 Blue |
| | LCQD LC Quad | 2 Black |
| | | 3 Green |
| | | 4 Beige |
| | | 5 Aqua |



ORDER CODE example: **RSH - LCDX - 1**

Specifications may change without notice. Display Product Photos Shown are samples for viewing, not actual products. Colours and styles may vary.

www.fiberon.com