

LC SERIES

- Ultra low insertion loss and back reflection
- FOCIS-10; TIA/EIA-604-10 Compliant
- Telcordia GR-326-4 CORE Compliant
- UL94 V-0 rated plastic housing and boots
- Durable push/pull latch
- Small form factor, 50% of SC
- RoHS compliant

SPECIFICATION		SINGLEMODE	MULTIMODE
Ferrule Inner Diameter (Available in custom ID sizes)		125µm +1/-0 Concentricity: ≤ 1µm	127µm
		125.5µm +1/-0 Concentricity: ≤ 1µm	144µm
		126µm +1/-0 Concentricity: ≤ 1µm	230µm
Insertion Loss	Elite Con. Ultra Low loss	0.05dB Typical	
	Elite Con. APC Ultra Low loss	0.08dB Typical	
	High Spec Connector UPC	0.07dB Typical	
	High Spec Connector APC	0.10dB Typical	
	High Spec Connector MM		0.12dB
	Standard Connector	0.10dB Typical	0.16dB
Return Loss		≥ -55dB Typical (PC)	
		≥ -65dB Typical (APC)	
Durability		<0.1dB Typical change, 500 matings	<0.1dB Typical change, 500 matings
Operating Temperature		-40°C to +75°C	-40°C to +75°C

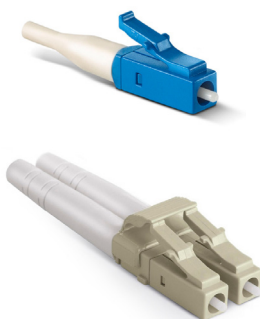
LC-Elite™ LC High Spec PRE-ASSEMBLED



CODE	TYPE	FERRULE I.D.	HOUSING	BOOT	COLOR
CN-LCE	LC Elite Connector	SX Simplex 125 SM 125µm	1 Blue	1 900µm	1 Blue
CN-LCAE	APC Elite Connector	DX Duplex 125L SM 125µm Low Loss	2 Black	2 2.0mm Standard	2 Black
CN-LC	LC High Spec Connector	1255 SM 125.5µm	3 Green	3 2.0mm short 17mm	3 Green
CN-LCA	APC High Spec Connector	126 SM 126µm	4 Beige	2B 2mm Bendable Boot	4 Beige
		127 MM 127µm	5 Aqua	4 2.0mm short 19mm	5 Aqua
			6	3.0mm Standard	8 White

ORDER CODE example: **CN-LC - SX - 125 - 118**

LC CONNECTOR STANDARD



CODE	TYPE	FERRULE I.D.	HOUSING	BOOT	COLOR
CN-LCPA	Pre-Assembled	SX Simplex 125 SM 125µm	1 Blue	1 900µm	1 Blue
CN-LCUK	Unassembled	DX Duplex 125L SM 125µm Low Loss	2 Black	2 2.0mm Standard	2 Black
CN-LCAPA	APC Pre-Assembled	1255 SM 125.5µm	3 Green	3 2.0mm short 17mm	3 Green
CN-LCAUK	APC Unassembled	126 SM 126µm	4 Beige	2B 2mm Bendable Boot	4 Beige
		127 MM 127µm	5 Aqua	4 2.0mm short 19mm	5 Aqua
		000 No Ferrule Opt.	6	3.0mm Standard	8 White

ORDER CODE example: **CN-LCPA - SX - 125 - 118**

01/03/16-Interconnect-FAM-Rev 2.7 - Changes without prior notice

Specifications may change without notice. Display Product Photos Shown are samples for viewing, not actual products. Colours and styles may vary.

www.fiberon.com



HEADQUARTER
Tel. +1 508 616 9500
Fax +1 508 616 9600
sales@fiberon.com

USA-CA
Tel +1-408-262-8500
Fax +1-408-262-8600
sales@fiberon.com

POLAND
Tel. +48 71 727 7237
Fax +48 71 793 99 11
sales-eu@fiberon.com

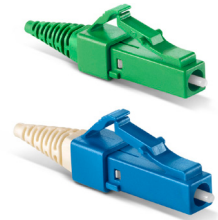
Hong Kong, PRC
Tel. +852 3171 7616
Fax +852 3171 7613
sales-ch@fiberon.com

Taiwan (R.O.C.)
Tel +886 939512000
Tel/Fax: +886 2 82854503
sales-tw@fiberon.com

DUBAI, U.A.E.
Tel. +971 4 3712968
Fax +971 4 3712969
sales-mea@fiberon.com

LC-M

CODE	TYPE	FERRULE I.D.	HOUSING	BOOT	COLOR
CN-LCMPAE	Elite LC-M	SX Simplex 125 SM 125µm	1 SM Blue	1 900µm	1 Blue
CN-LCMPAAE	Elite LC-M APC	DX Duplex 125L SM 125µm Low Loss	3 APC Green	12 1.2mm	2 Black
CN-LCMPA	Pre-Assembled	1255 SM 125.5µm	4 MM Beige	2 2.0mm	3 Green
CN-LCMUK	Unassembled	126 SM 126µm		6 3.0mm	4 Beige
CN-LCMPAA	Pre-Assembled APC	127 MM 127µm			8 White
CN-LCMUKA	Unassembled APC	000 No Ferrule Opt.			



ORDER CODE example:

CN-LCMPA - SX - 125 - 118

LC-UPC/APC UNIBODY CONNECTOR

CODE	TYPE	FERRULE I.D.	HOUSING	BOOT	COLOR
CN-LCUE	Elite Unibody UPC	SX Simplex 125 SM 125µm	1 SM Blue	1 900µm	1 Blue
CN-LCUAE	Elite Unibody APC	DX Duplex 125L SM 125µm Low Loss	3 APC Green	2 2.0mm	2 Black
CN-LCU	Unibody UPC	1255 SM 125.5µm	4 MM Beige	6 3.0mm	4 Beige
CN-LCUA	Unibody APC	126 SM 126µm			8 White
		127 MM 127µm			

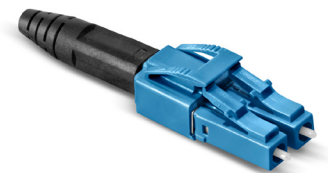


ORDER CODE example:

CN-LCU - SX - 125 - 128

LC DUPLEX UNIBOOT CONNECTOR

CODE	TYPE	FERRULE I.D.	HOUSING	BOOT	COLOR
CN-LCDXUBE	Elite UniBoot	WR With Rear Body 125 SM 125µm	1 Blue	2 2.0mm Standard	1 Blue
CN-LCDXUB	LC UniBoot	NR No Rear Body 125L SM 125µm Low Loss	3 Green	4 2.0mm short	2 Black
	ER Easy Reverse	1255 SM 125.5µm	4 Beige	5 3.0mm short	3 Green
		126 SM 126µm	5 Aqua	6 3.0mm Standard	5 Aqua
		127 MM 127µm	11 Magenta	7 45° Angled Boot	6 Red
				8 90° Angled Boot	8 White
				9 3.0mm Bendable Boot	11 Magenta



LC UNIBOOT Easy Reverse

ORDER CODE example:

CN-LCDXUB - NR - 125 - 128

For Pull Tab option please add:
-EHD to the end of the part number.

MINI LC HIGH DENSITY LC SOLUTION

CODE	COLOR
CN-LCMINIDXCLP	LC Mini Duplex Clip
	T Transparent
	S Specify

ORDER CODE example:

CN-LCMINIDXCLP - T



LC LOOPBACK MODULES

CODE	TYPE	CONNECTOR TYPE	FIBER	COLOR
LB-LCK	SM Singlemode	AA LC/UPC	9 900µm Fiber	2 Black
	MM Multimode	BB LC/APC		

ORDER CODE example:

LB-LCK - SM - BB - 9 - 2



Specifications may change without notice. Display Product Photos Shown are samples for viewing, not actual products. Colours and styles may vary.

www.fiberon.com