

# SNUGFIT Clip

TIGHTENS ADAPTER/PANEL FIT MORE THAN 30%.

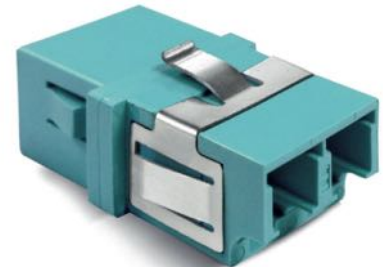
Snug Fit Adapter Clips can be integrated with any of Fiberon's SC Foot-print Adapters, (SC or LC).

These clips significantly reduce the undesirable movement of Adapters once installed in various sizes of metal/plastic panels or equipment.

1. The Snug Fit Adapters can be inserted/reinserted more than 50 times in/out of the panel without losing the initial function.
2. The Snug Fit Clip can be used in a wide range of standard adapter panels (upper limit and lower limit cut-out) and can reduce the deflection more than 30%.
3. The Snug Fit clip can be used in -40°C~+85°C temperature environment and incline angle variation is less than 1 degree.



SC Simplex Snug Fit Adapter no flange



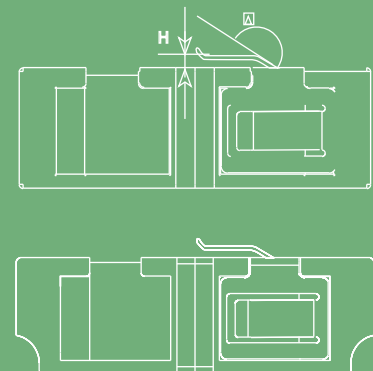
LC Duplex Snug Fit Adapter



LC Quad Snug Fit Adapter

There is almost no deformation after one time installation on the cut-out panel

Initial height mm(H) (First installation)	Measurement after 2nd usage in the Cut-out up-per limit 13x10mm	Measurement after 2nd usage in the Cut-out up-per limit 13x9.6mm
0.93	0.93	0.92
0.93	0.93	0.93
0.95	0.93	0.92

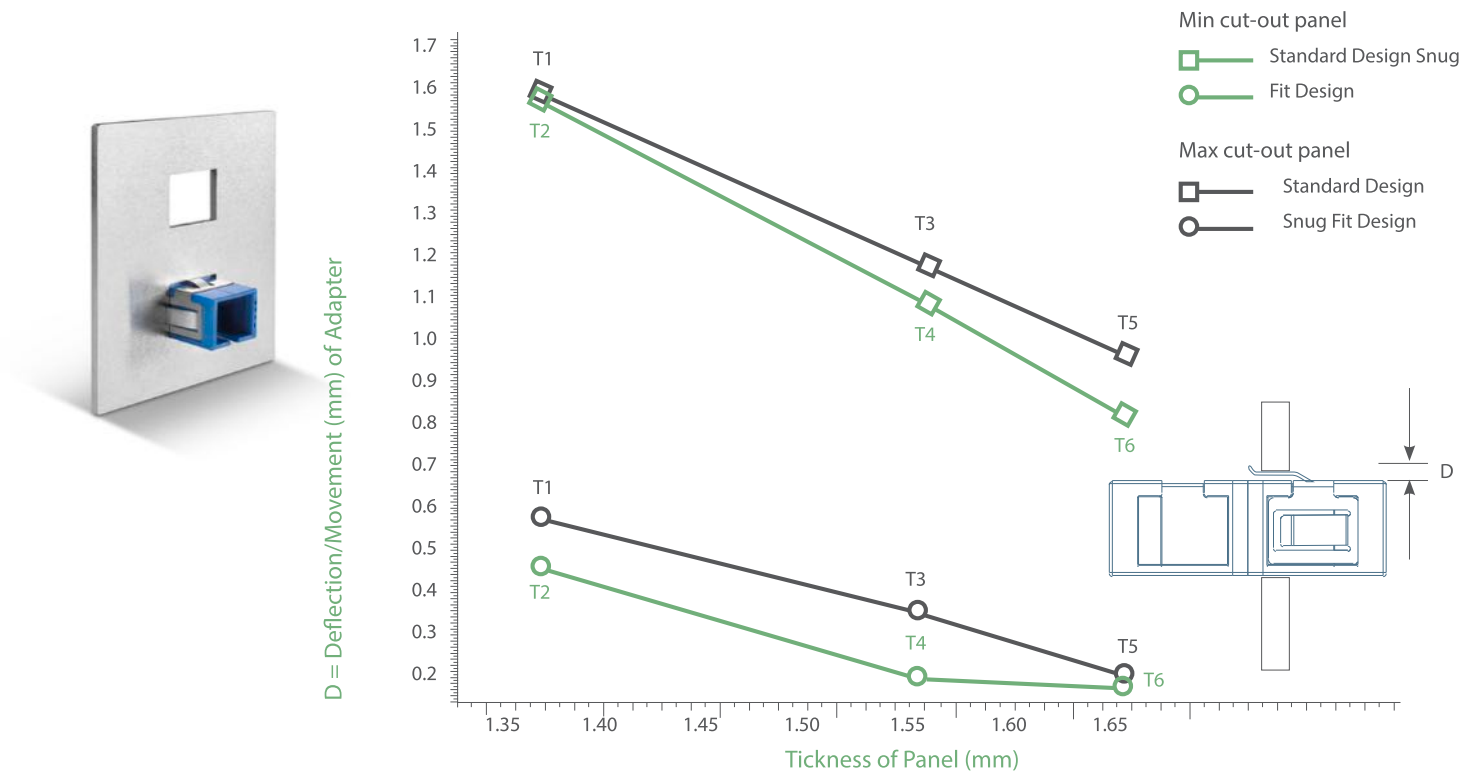


There is less than 0.08mm deformation after 50 times of usage (eg. 10.23mm to 10.15mm).



Experience • Focus • Capability • Worldwide Reach

Changes in the deflection of Adapter after installed on various cut-out panels ( T1 to T6):  
The deflection can be significantly reduced after using the Snug Fit Adapter Clip.



Reliability of Snug Fit metal clip after 50 times of insertion and re-insertion into various sized panels.

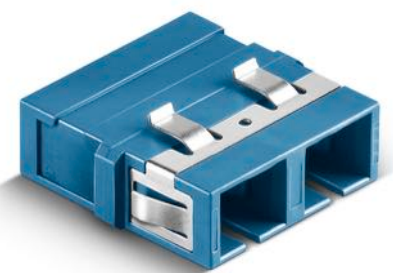
Mark as	Panel thickness (mm)	Dimensions (mm)	Conventional adapter (mm)	SNUG FIT adapter (mm)
T1	1.37	Max (13x10)	1.62	0.67
T2		Min (13x9.6)	1.57	0.50
T3	1.54	Max (13x10)	1.18	0.46
T4		Min (13x9.6)	1.18	0.22
T5	1.62	Max (13x10)	0.94	0.32
T6		Min (13x9.6)	0.99	0.18

## SNUGFIT ADAPTERS

CODE	TYPE	COLOR	SLEEVE
AD-SCSF	SX Simplex SC	1 Blue	1 Zirconia
AD-LCSF	DX Duplex SC/LC	2 Black	2 Phosphor Bronze
		3 Green	
		4 Beige	
		5 Aqua	
		QD Quad LC	

Example code: AD-SCSF - DX - 1 - 1

## ORDER CODE



Specifications may change without notice. Display Product Photos Shown are samples for viewing, not actual products. Colours and styles may vary.

[www.fiberon.com](http://www.fiberon.com)

USA-MA  
Tel. +1 508 616 9500  
Fax +1 508 616 9600  
sales@fiberon.com

USA-CA  
Tel. +1 408 262 8500  
Fax +1 408 262 8600  
sales@fiberon.com

POLAND  
Tel. +48 71 727 7237  
Fax +48 71 793 99 11  
sales-eu@fiberon.com

TAIWAN, (ROC)  
Tel. +886 939512000  
Tel/Fax: +886 2 82854503  
sales-tw@fiberon.com

DUBAI, U.A.E.  
Tel. +971 4 3712968  
Fax +971 4 3712969  
sales-mea@fiberon.com

